

NEP EUROPE: FACTSHEET

NEP NL

Studio 4

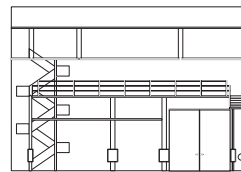
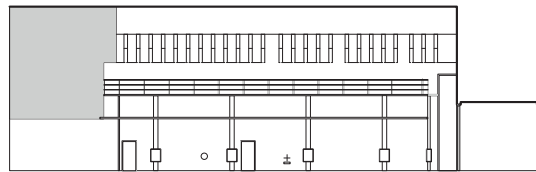
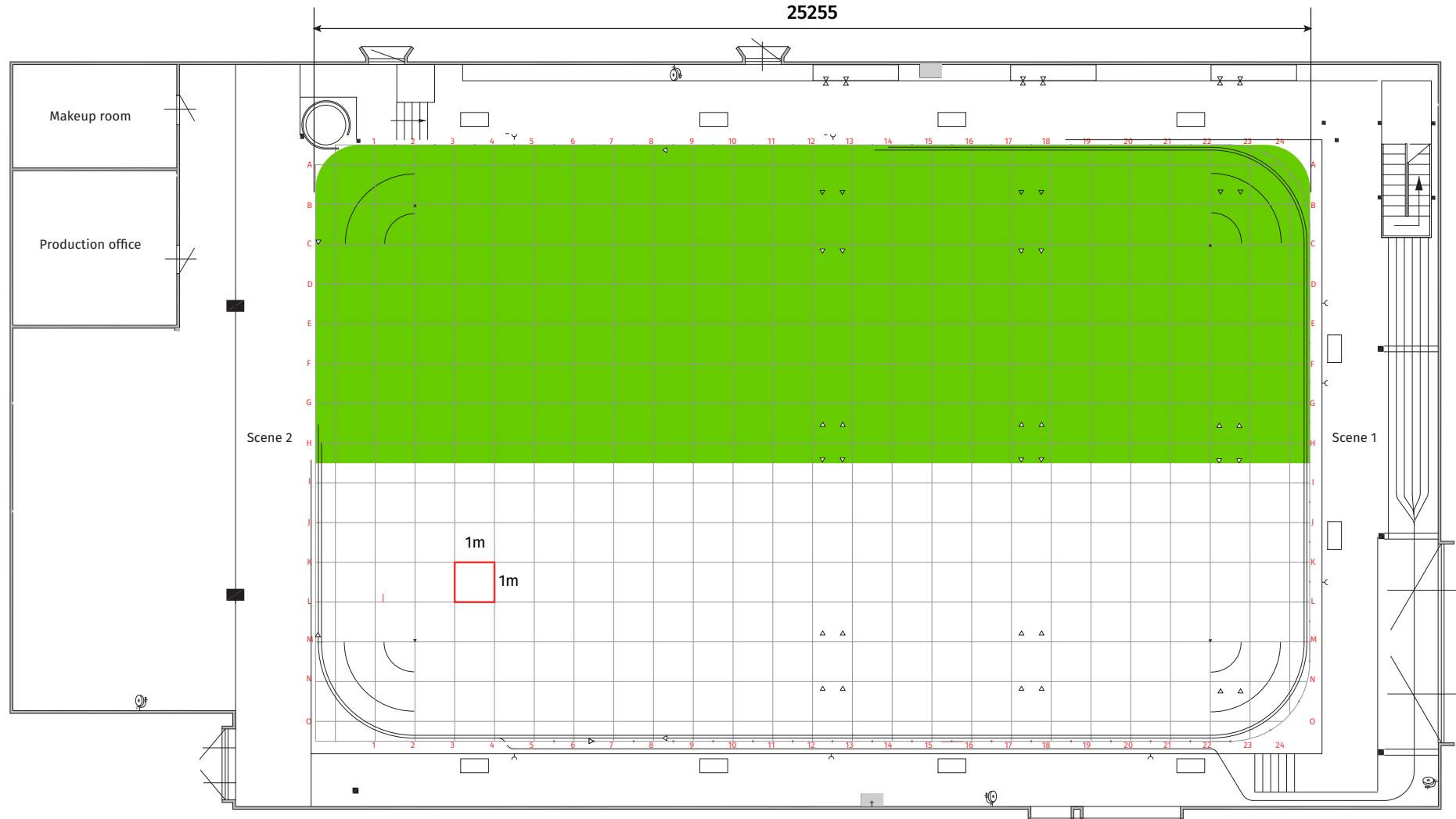
NEP The Netherlands
André van Duinboulevard 4
1217 Hilversum, the Netherlands

sales@nepgroup.com
+ 31 35 773 15 00



WWW.NEPGROUP.COM

STUDIO 4 FLOOR PLAN



STUDIO 4 SPECIFICATIONS

Medium sized studio: ideal for short-term productions

| GENERAL | |
|--------------------------------------|--|
| Dimensions | 25 m x 15 m |
| Effective floor area | 375 m ² |
| Free height | 8.85 m |
| Air conditioning | Available, both cooling and heating |
| Parking | 1400 spaces Paid parking on Parking deck A Cost: € 1.50 per 55 minutes or € 7.50 per day |
| Security | Present during productions in the building. On request, dedicated for production |
| Wardrobe | Available |
| Loading and unloading | Covered in the hallway decor |
| Internet facilities | WiFi with password |
| Dedicated Internet connection | On request |
| Production passes | 10 per production |

| TECHNICAL SPECIFICATIONS | |
|------------------------------|-----------------------------------|
| Floor finish | Smooth cast floor, can be painted |
| Maximum floor load | 800 kg / m ² |
| Maximum axle load | 5 tons |
| Maximum wheel load | 2.5 tons |
| Decor doors | 5.00 m x 3.70 m (w x h) |
| Maximum grid capacity | 50 kg / m ² |
| Curtain rails | Height 7.00 m |
| Black curtain | All around, height 6.90 m |
| Electricity supply | Per program on request |

| TECHNICAL SPECIFICATIONS | |
|-------------------------------|--------------------------------------|
| Rigging / light grid | On request |
| Light connection field | On request from the lighting company |
| Other | Water point and drainage |

| PRODUCTION FACILITIES | |
|-------------------------------|---|
| Production | Studio 4 is connected to NEP's Centralized Production platform |
| MCR | The Centralized Production platform is connected to our MCR. In addition to various incoming and outgoing connections, our MCR provides a variety of additional media services, including recording, playout, graphics and EVS services |
| Post production | The Centralized Production platform is connected to the post production platform. In addition to live ingest and editing, all preparatory post activities can be connected to studio activities in a seamless workflow. |
| Emergency power supply | The Centralized Production platform is connected to the Studio Centrum's emergency power supply |

| OTHER AREAS | |
|--|---|
| Production office | Connected to the studio floor |
| Dressing rooms | On request |
| Makeup room | Makeup room with 1 position |
| Reception area | Central hall with toilets and reception (staffed on request) |
| Foyer (optional, subject to availability) | 75 tables and chairs, bar with dishwasher, refrigerator and hot/cold water, sound system and live monitor |
| Toilets | In the reception area and near the foyer |