

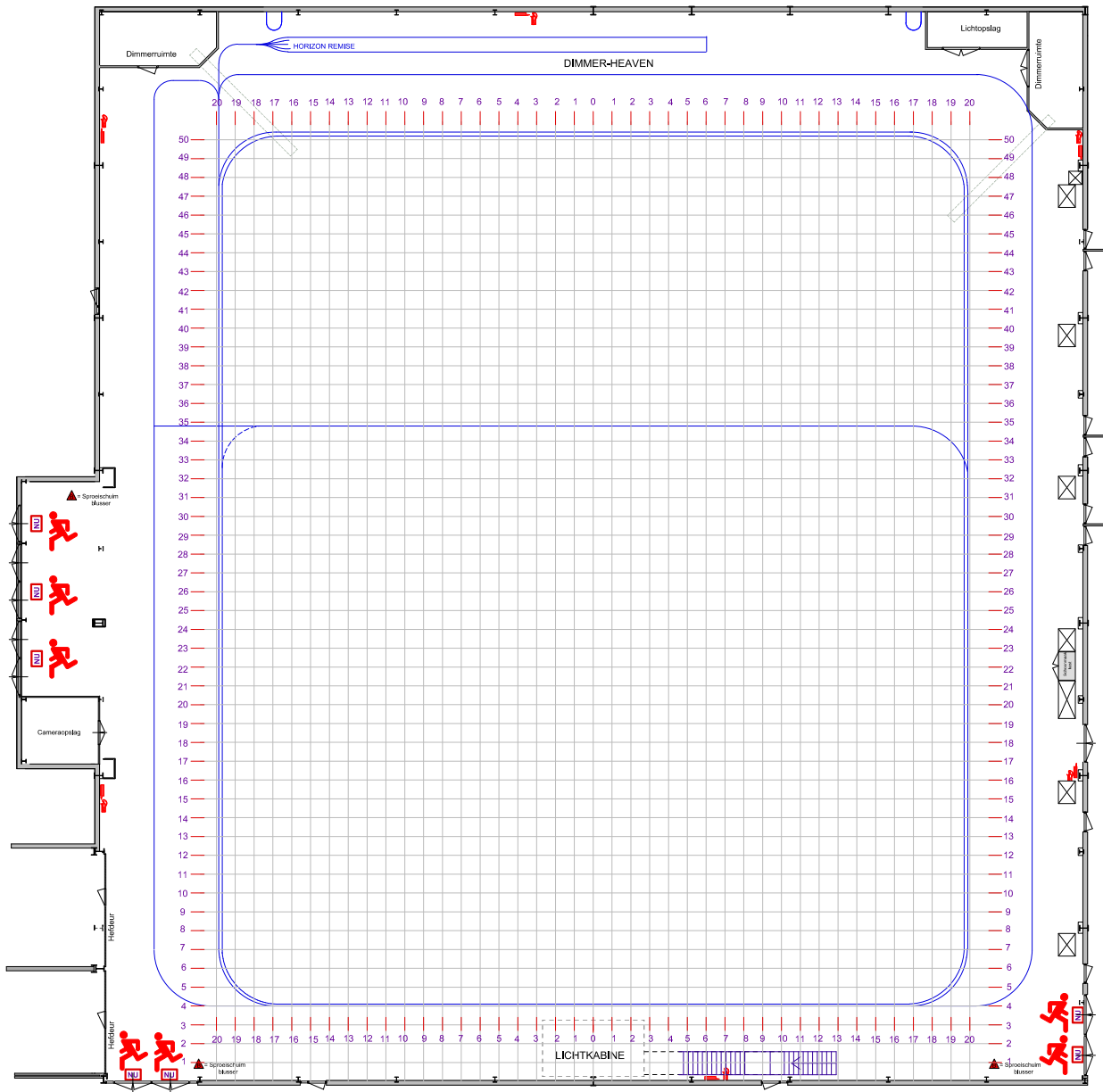
NEP EUROPE: FACTSHEET
NEP NL
Studio 22

NEP The Netherlands
André van Duinboulevard 4
1217 Hilversum, the Netherlands

sales@nepgroup.com
+ 31 35 773 15 00



FLOORPLAN STUDIO 22 MEDIA PARK



Length 56 m x width 52 m
inner curtain rail

STUDIO 22 SPECIFICATIONS

Europe's largest TV studio: ideal for gaming and entertainment shows

| GENERAL | |
|--------------------------------------|---|
| Dimensions | 56 m x 51 m |
| Effective floor area | 2.500 m ² |
| Free height | 9.80 m |
| Air conditioning | Available, both cooling and heating |
| Capacity | 2000 people |
| Parking | 24 private parking spaces near the studio 1400 spaces Paid parking on Parking deck A Cost: € 1.50 per 55 minutes or € 7.50 per day |
| Security | Present during productions in the building/at the desk |
| Wardrobe | Wardrobe racks are available in the public reception area |
| Loading and unloading | Through a roller shutter directly in the studio |
| Internet facilities | WiFi with password |
| Dedicated Internet connection | On request |

| TECHNICAL SPECIFICATIONS | |
|------------------------------|---|
| Floor finish | smooth cast floor, can be painted |
| Maximum floor load | 1000 kg / m ² |
| Maximum axle load | 5 tons |
| Maximum wheel load | 2.5 tons |
| Decor doors | 4.0 m x 5.5 m (w x h) |
| Maximum grid capacity | In consultation |
| Curtain rails | Height 9.60 m |
| Black curtain | All around, height 9.50 m |
| White skyline canvas | Length 50 m, height 9.50 m - on request and subject to availability |

| TECHNICAL SPECIFICATIONS | |
|-------------------------------|--|
| Electricity supply | On the floor: 12 x 125A, 5 x 63A, 8 x 32A In grid: 1 x 125A, 13 x 32A |
| Fixed dimmers | Use on request |
| Light connection field | Very extensive, specifications on request |
| Other | Water point and drainage |

| PRODUCTION FACILITIES | |
|------------------------|---|
| Production | Studio 22 has a location to place an OBV next to the studio. At the OBV location, there is a connection box for audio, camera and video connections to several points on the studio floor |
| LiveCenter | Studio 22 is connected to the LiveCenter. In addition to various incoming and outgoing connections and MCR services, the LiveCenter provides a variety of additional media services, including recording, play-out, graphics and EVS services |
| Post-production | Studio 22 is connected to the post-production platform. In addition to live ingest and editing, all preparatory post activities can be connected to studio activities in a seamless workflow |

| OTHER AREAS | |
|--|--|
| Production office | Equipped with four workstations and live monitor |
| Dressing rooms | 3 large dressing rooms with a toilet, shower, sink, seating area and live monitor 11 dressing rooms with a seating area (including dressing rooms 1, 2, 3, 10 and 12 with live monitor) 1 large dressing room for groups |
| Makeup room | Makeup room with 10 positions and live monitor |
| Reception area | Private reception area for public with toilets groups |
| Foyer (optional, subject to availability) | 100 chairs and tables with space for a kitchen. All required connections are available |
| Toilets | Near the dressing rooms and in the reception area |